



### Access & alert options

HOTEYE is accessible via the internet on PC, laptop, mobile phone and PDA.

Internet access networks to connect to HOTEYE include: fixed line, leased line, GSM, HOTNET and satellite.

Information alerts can be sent to the user via the following communication mediums: on-screen display, SMS, MMS, e-mail and automated voice-call.

No special hardware or software is required for access to the HOTEYE system.

### HOTEYE procurement options

Option 1 – Online at [www.HOTSURE.co.za](http://www.HOTSURE.co.za).

Option 2 – From a local accredited HOTSURE distribution partner.

Option 3 – Contact us on 0861 HOTSURE (468 7873) or email your request to [sales@hotsure.co.za](mailto:sales@hotsure.co.za).

**Available on rental and outright purchase.**



Product distribution, airtime, call centre, accounts, admin, insurance & finance.

[www.HOTSURE.co.za](http://www.HOTSURE.co.za) / 0861 HOTSURE

### Contact info:

**URL:**  
[www.hotsure.co.za](http://www.hotsure.co.za)

**Information request:**  
[info@hotsure.co.za](mailto:info@hotsure.co.za)

**Quotations request:**  
[sales@hotsure.co.za](mailto:sales@hotsure.co.za)

**Accounts enquiry:**  
[accounts@hotsure.co.za](mailto:accounts@hotsure.co.za)

**Support request:**  
[support@hotsure.co.za](mailto:support@hotsure.co.za)

**Telephone:**  
0861 HOTSURE (468 7873)

**Call Centre:**  
0861 HOTCALL (468 2255)

**Facsimile:**  
086 640 5744

**Postal Address:**  
PO Box 15071  
Lyttelton,  
0140  
South Africa

## 0861 HOTSURE

### Manage & Command

HOTEYE is a global GIS based remote monitoring, management and command system for the various HOTGROUP pro-active risk management devices: HOTGUARD, HOTMOBILE, HOTSTOCK, HOTGAME, HOTSAFE, HOTCONTROL & HOTNET.

For your protection HOTEYE servers are situated in a vault with its own climate control, safety systems, power supply and data backup systems.

Data communication to and from devices are encrypted and access to data is password protected.

No special client side hardware and software is required.



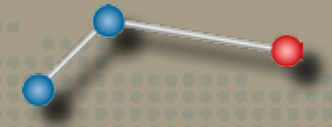
**Pro-Active Risk Management Solutions**



*"safeguarding tomorrow today"*



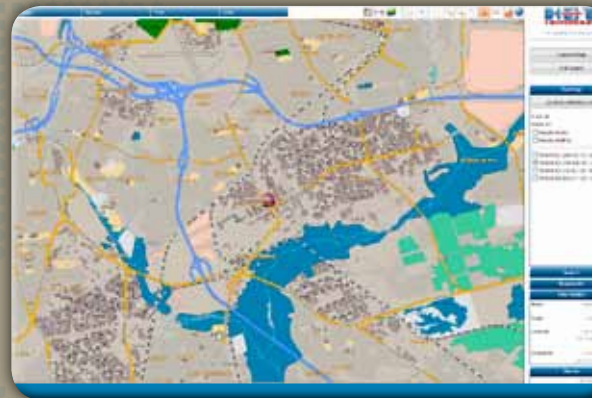
# HOTEYE<sup>®</sup> - product information



## Introduction:

Looking for a multi purpose GIS based pro-active risk management solution? A system that requires no maintenance, special software or hardware? A system capable of reaching even beyond GSM?

Then HOTEYE is for you. It intelligently and safely connects you with your remote assets, where ever, when ever. HOTEYE also monitors the health of your connected devices for absolute peace of mind.



## Features:

HOTEYE is a safe and easy to use website, database and command system that enables you to monitor your: fixed assets, mobile assets, personnel, weather stations, livestock and game in near-real-time.

HOTEYE seamlessly interfaces with almost any business type and personal application. Login, personalise and go!

HOTEYE allows for easy user definable alert features such as: SMS, MMS, voice-call, e-mail and on screen notifications. Responses are automated where the action of a single exception can automatically trigger the response of others.

Various application uses including:

- Vehicle tracking
- Fleet management
- Guard monitoring
- Alarm monitoring
- Process control
- Container tracking
- Small asset tracking
- Trailer tracking
- Personnel protection
- Outdoor sports tracking
- Livestock protection
- Eco-tourism
- Disaster management
- Construction

- INTERNET ACCESSED
- GSM & VHF DATA COMMUNICATION
- SMS/MMS/E-MAIL/VOICE-CALL ALERTS
- GLOBAL MULTI DEVICE WEB BASED GIS
- OVER THE AIR UNIT RE-CONFIGURATION
- ENCRYPTED DATA COMMUNICATION
- NO SPECIAL HARDWARE OR SOFTWARE



Other Products & Services:

- Animal monitoring
- Vehicle tracking
- Guard tracking
- Wireless automation
- Container tracking
- Alarm monitoring

## EASY ACCESS

- PC, Laptop & Netbook
- www.HOTEYE.co.za
- Mobile phone & PDA
- www.HOTEYE-Lite.co.za

## INTERACTIVE WEB GIS TOOL

- Web GIS for PC (www.HOTEYE.co.za)
- Web GIS for phone & PDA (www.HOTEYE-Lite.co.za)
- Draw your own mapping online
- Vector & Satellite mapping images